

DIARY / FEBRUARY 2025

What's on in London

What to see and do in the Capital this February

WORDS BY ALI HOWARD

THEATRE

Alterations, 20 February-5 April

Step into 1970s London with this vibrant new production, directed by Lynette Linton. Over the course of one intense night, a Guyanese tailor finds himself juggling impossible demands, fraying relationships, and the weight of his own ambition. With sharp humour and plenty of heart, it shines a light on the aspirations and sacrifices of the Windrush generation. The talented cast, including Arinzé Kene and Cherrelle Skeete, brings the story to life in a way that feels fresh and urgent. With stunning design from Frankie Bradshaw and a powerful score by XANA, it promises to be as visually striking as it is emotionally resonant.

Lyttelton Theatre, South Bank, SE1 (020 3989 5455; nationaltheatre.org.uk)



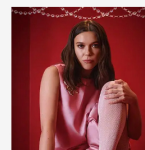
© Helen Murray

FASHION

London Fashion Week Gala, 21 February

February brings the buzz of LFW's autumn/winter '25 offering, and this exclusive gala gives you a front-row seat. Held in the elegant Royal Horseguards Hotel, guests can expect a welcome drink, fashion show and live entertainment, plus an opportunity to shop the catwalk. The event draws a mix of designers, industry insiders, and style enthusiasts, creating an atmosphere that's both vibrant and refi

Hot reads this month



PEOPLE / FEBRUARY 2025

**Exclusive
Interview: Synnøve
Karlsen**

BY LIZ SKONE JAMES

INTERIORS / FEBRUARY
2025**At Home with
Linda Morey-
Burrows**

BY ALI HOWARD

FOOD & DRINK /
FEBRUARY 2025**Recipe: Chocolate
and Pistachio
Barquette**

BY LIZ SKONE JAMES

ned. It's a chance to witness the creativity and craftsmanship that define London as a fashion capital whilst enjoying an up-close look at standout couture. The gala is a celebration of what makes London's fashion scene truly iconic. Dress code is formal, so bring your best.

2 Whitehall Court, SW1A (smglobalcatwalk.com)



EXHIBITION

Material Sensibilities, Until 1 March

Prepare to immerse yourself in a world where texture, form, and material take centre stage. This group show brings together an eclectic mix of works, each exploring the tactile and sensory qualities of art. Featuring pieces from a range of international contemporary artists including Nnenna Okore, Naomi Wanjiku Gakunga and Susanne Kessler, it invites visitors to consider not just what they see, but how art resonates on a deeper level. The gallery's intimate setting makes it the perfect space to experience these thought-provoking creations up close, with works spanning sculpture, mixed media, and experimental techniques. Whatever your art style, there's plenty to explore here.

October Gallery, 24 Old Gloucester Street, WC1N (020 7242 7367;

octobergallery.co.uk)

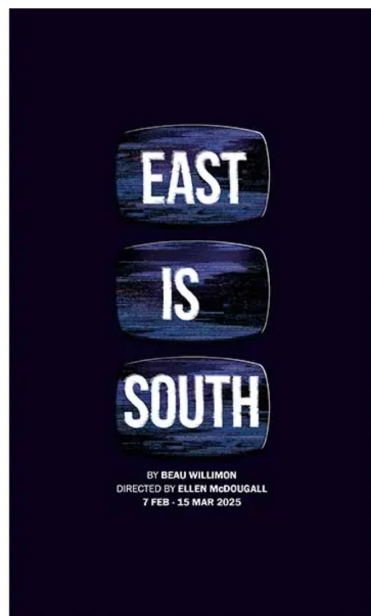


THEATRE

East is South, 7 February-15 March

A gripping thriller from *House of Cards* creator Beau Willimon makes its world premiere this month. Set in a world on the brink of technological upheaval, it delves into humanity's uneasy relationship with artificial intelligence. At its centre is Logos, a sophisticated AI programme nearing consciousness. When a security breach threatens to release it into the world, two coders are interrogated, and the clock starts ticking to uncover the truth about who's responsible and why. Starring Kaya Scodelario (*Skins*) and Cliff Curtis (*Avatar: The Way of Water*), both making their UK stage debuts, it promises an intriguing – if unnerving – experience.

Hampstead Theatre, Eton Avenue, NW3 (020 7722 9301; hampsteadtheatre.com)



Bridget Riley, Green, Blue, Red and Yellow, 1982. Signed and dated, gouache and pencil on paper. 74.5 x 63 cm, courtesy of the artist and Osborne Samuel

EXHIBITION

Lives Less Ordinary: Working-Class Britain Re-seen, Until 20 April

Two Temple Place opens its doors to a major new exhibition celebrating the rich and complex stories of Britain's working class through art. Spanning painting, photography, film, sculpture, and ceramics, this fascinating showcase shines a light on artists from working-class backgrounds, offering nuanced perspectives on identity, kinship, and community. With over 150 works on display, including pieces by well-known figures like Beryl Cook and rising stars like Rene Matic, the exhibition explores themes of family, place, and connection. And, set against the striking neo-Gothic opulence of the building itself, it offers a thought-provoking dialogue between its surroundings and the art on view. Not to be missed.

Two Temple Place, WC2R (020 7836 3715; twotempleplace.org)





© The Estate of Bert Hardy, The Hyman Collection, Courtesy of the Centre for British Photography

ART & EXHIBITIONS

Needle Dance, 17 February – 2 March

Immerse yourself in *Needle Dance*, a breathtaking multimedia exhibition by Makiko Harris, showing at art'otel London Hoxton. This bold installation explores feminism, fate, and connection through monumental needle sculptures, intricate two-dimensional artworks, and an underwater art film. Inspired by the Japanese myth of the red thread of fate, the exhibition features dancers entwined in striking red ropes, filmed in an ethereal underwater setting.

Presented in collaboration with the Kristin Hjellegjerde Gallery, *Needle Dance* is Harris's second solo exhibition and includes behind-the-scenes footage revealing the intense creative process. Visitors can also marvel at Deborah Milner's exquisite costumes, created for the project, and enjoy a fully immersive art experience in art'otel's state-of-the-art cinema and gallery space.

Art'otel London Hoxton, EC1V (artotel.com)



Needle Dance Credit Carlos Basillisco

Share   



BY ALI HOWARD

25

25 YEARS OF
HANDLING
QUALITY PROPERTY



Featured Articles



LIFESTYLE / FEBRUARY 2025

Shopping: Clock This

We're counting down to Watches and Wonders 2025, with what to watch in the world of haute horology, from Bulgari to Tagheur and more...



FOOD & DRINK / FEBRUARY 2025

Recipe: Chocolate and Pistachio Barquette

Kelly Cullen, head pastry chef at Cornus's delicious recipe to woo the one you love.



TRAVEL / FEBRUARY 2025

Spotlight On: Phuket

White Lotus is heading to Thailand for season three, and so are we, with a look at Phuket's best hotels

